

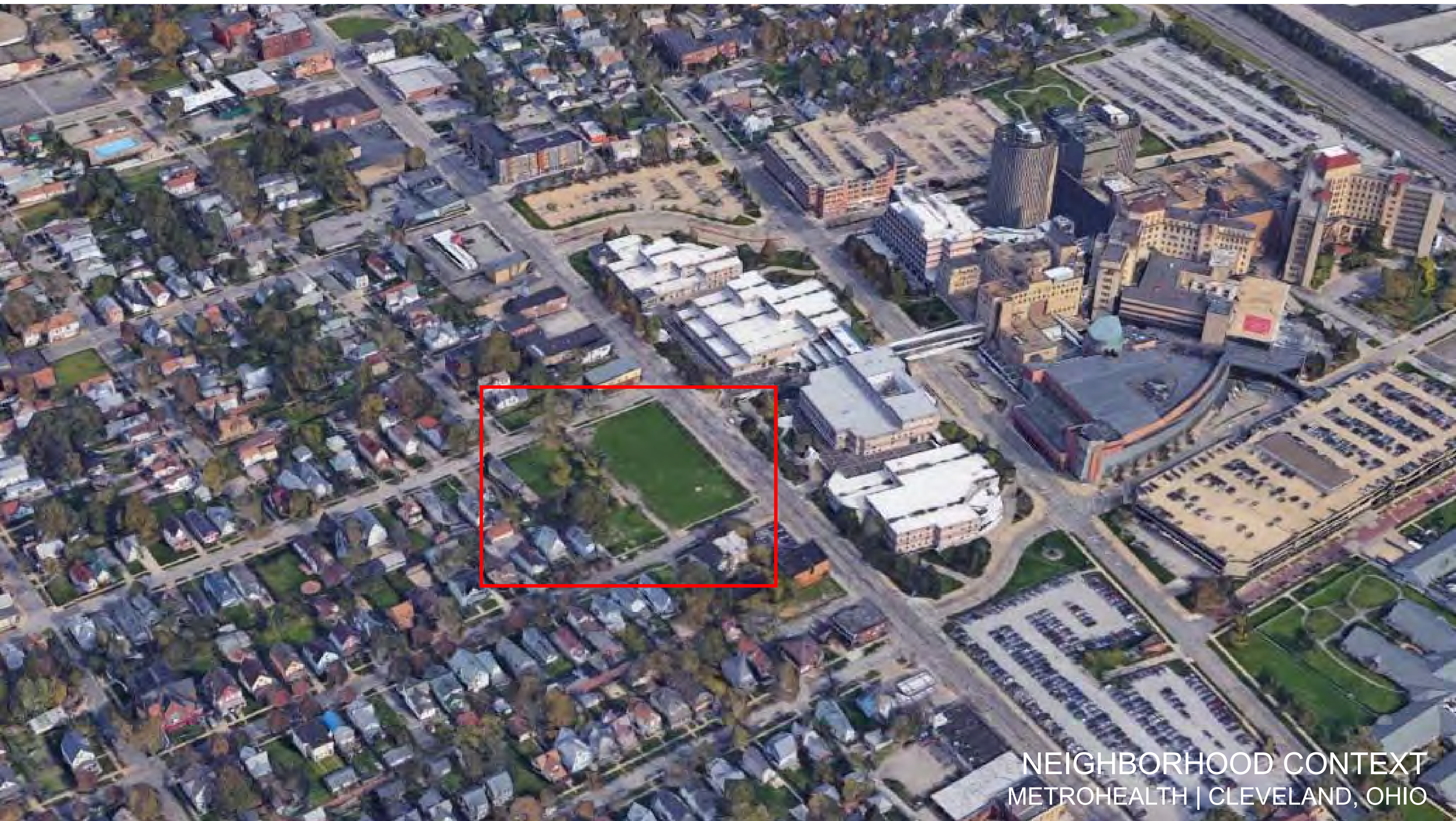
# METROHEALTH SOUTH

PROPOSED 100-UNIT APARTMENT AND RETAIL MIXED USE BUILDING  
WEST 25<sup>TH</sup> STREET, BETWEEN TROWBRIDGE AND WOODBRIDGE

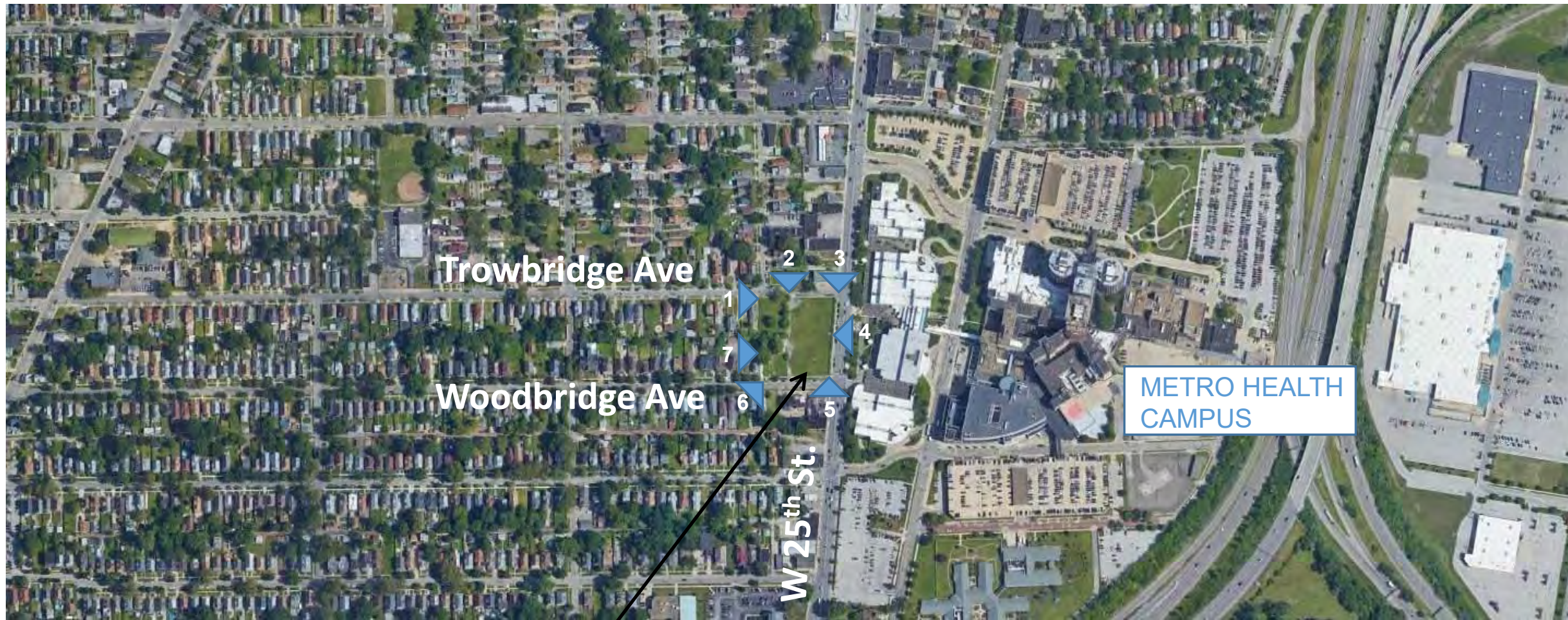
SUBMISSION FOR  
NEAR WEST DESIGN COMMITTEE /  
CLEVELAND PLANNING COMMISSION

METROHEALTH SOUTH | CLEVELAND, OHIO



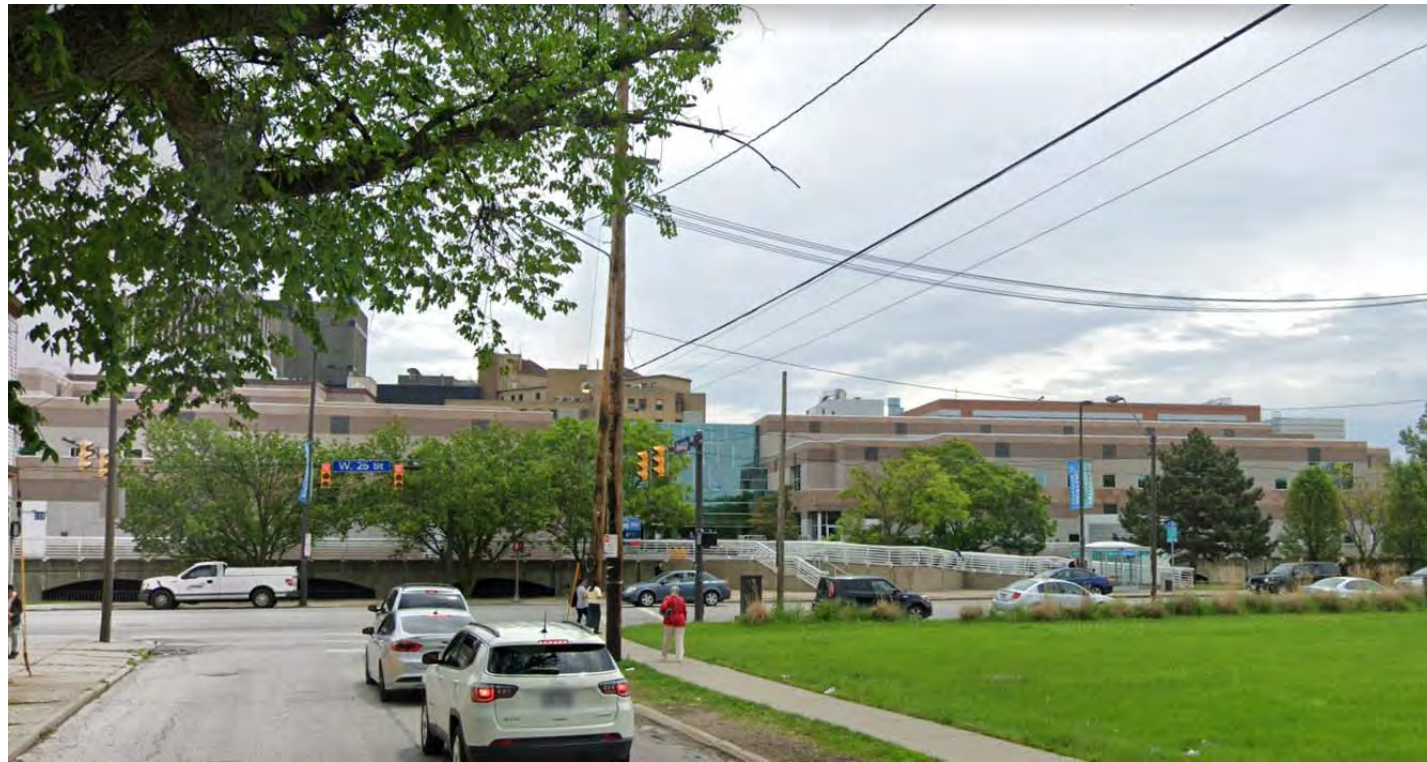


NEIGHBORHOOD CONTEXT  
METROHEALTH | CLEVELAND, OHIO



SITE LOCATION



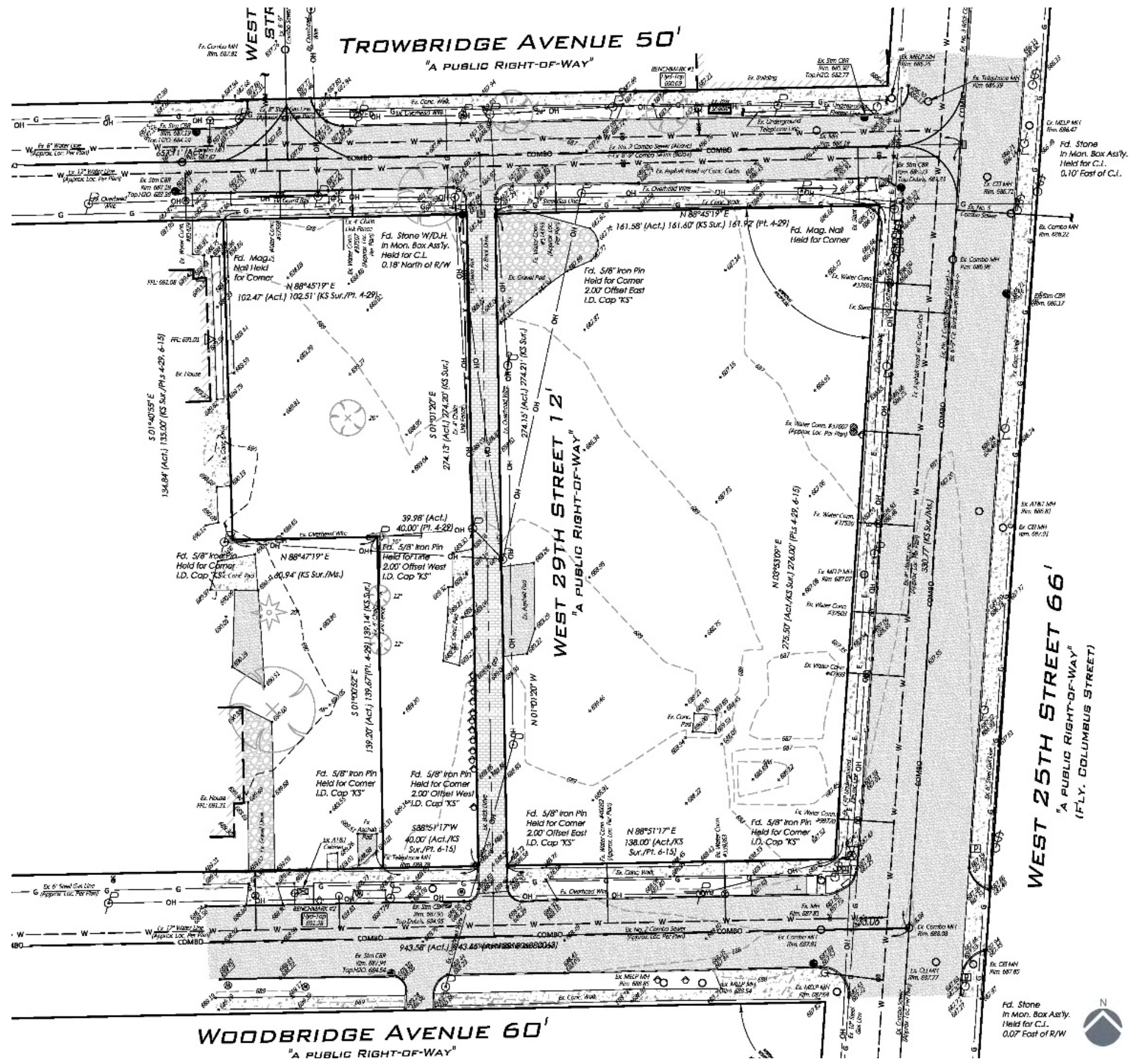


**CONTEXT – EXISTING BUILDINGS – WEST 25<sup>TH</sup> CORRIDOR**  
METROHEALTH SOUTH | CLEVELAND, OHIO



**CONTEXT – EXISTING BUILDINGS – TROWBRIDGE AND WOODBRIDGE**  
METROHEALTH SOUTH | CLEVELAND, OHIO

EXISTING CONDITIONS – SITE SURVEY  
 METROHEALTH SOUTH | CLEVELAND, OHIO

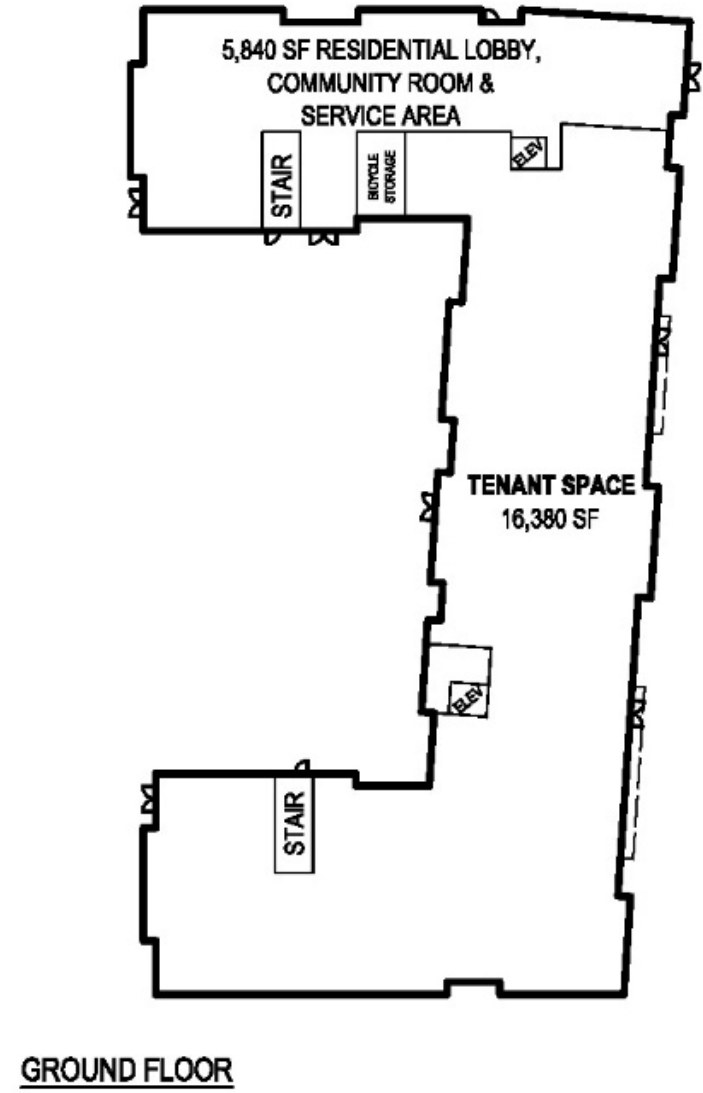
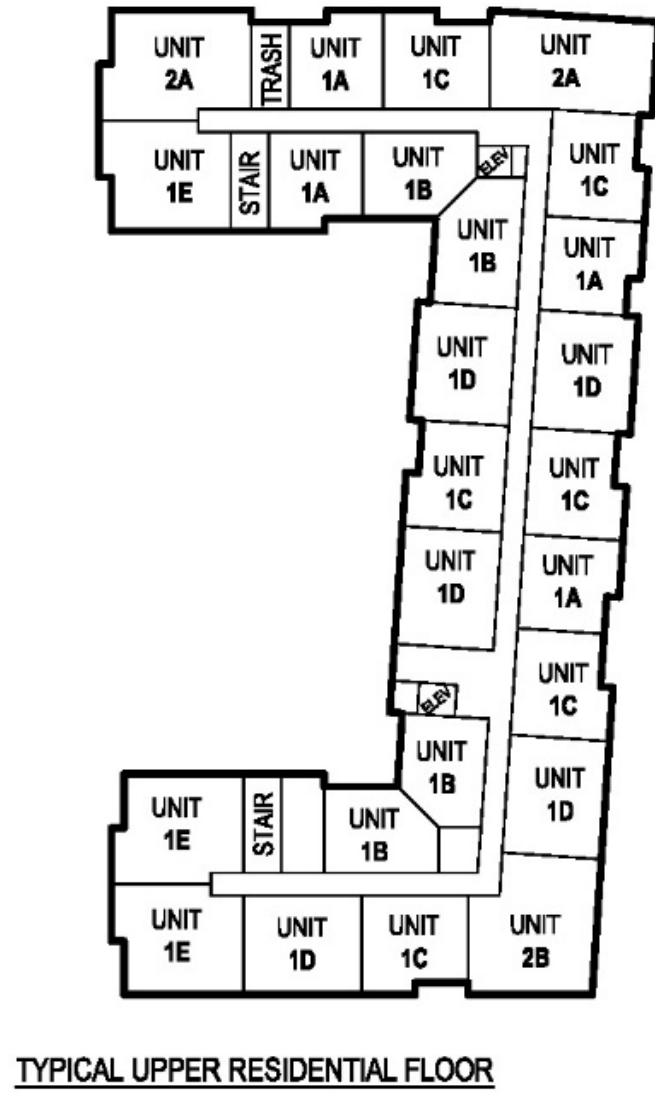
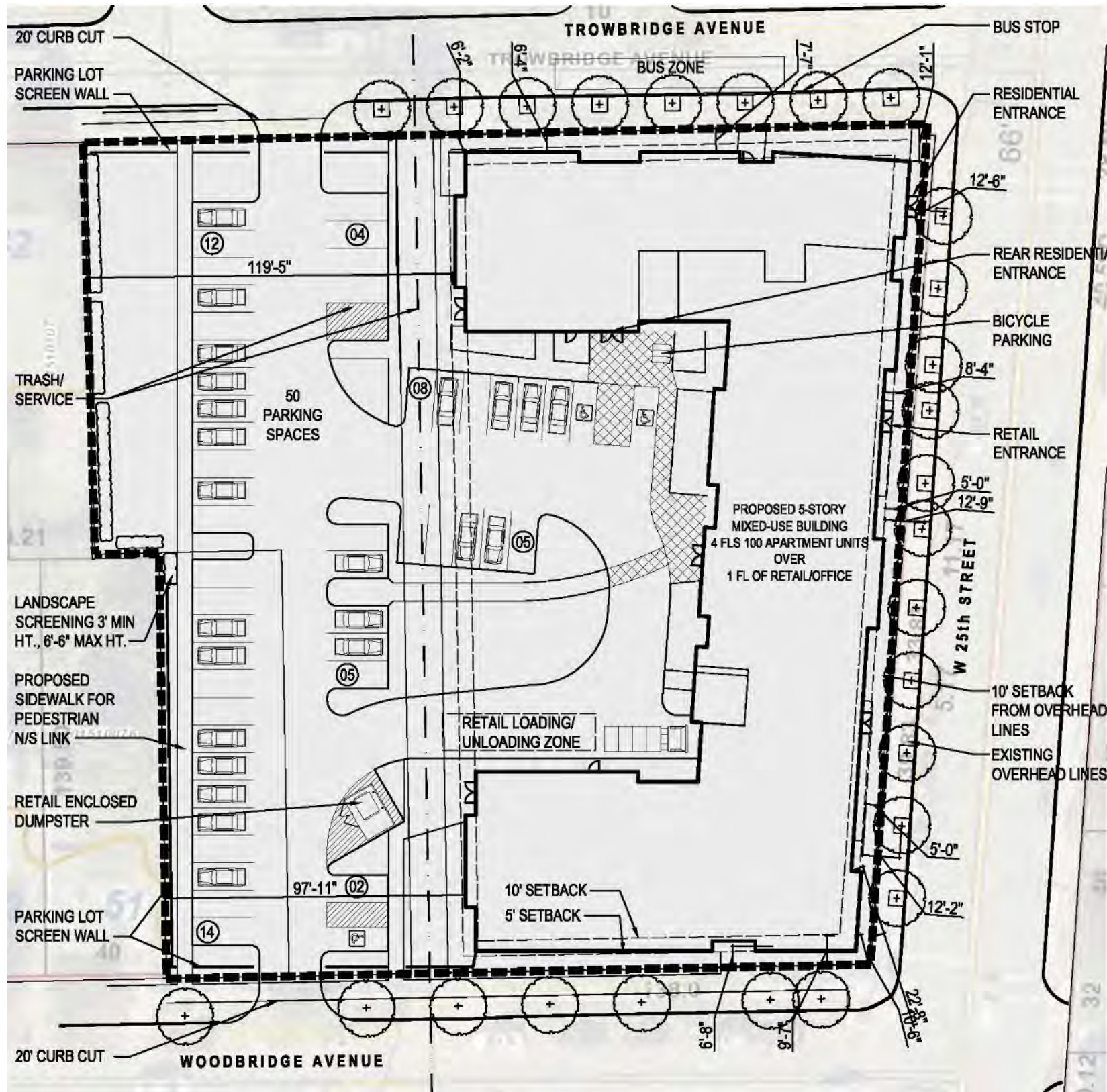


Fd. Stone  
 in Mon. Box Ass'y.  
 Held for C.L.  
 0.07 East of R/W



**METROHEALTH MASTERPLAN CONTEXT**  
METROHEALTH SOUTH | CLEVELAND, OHIO

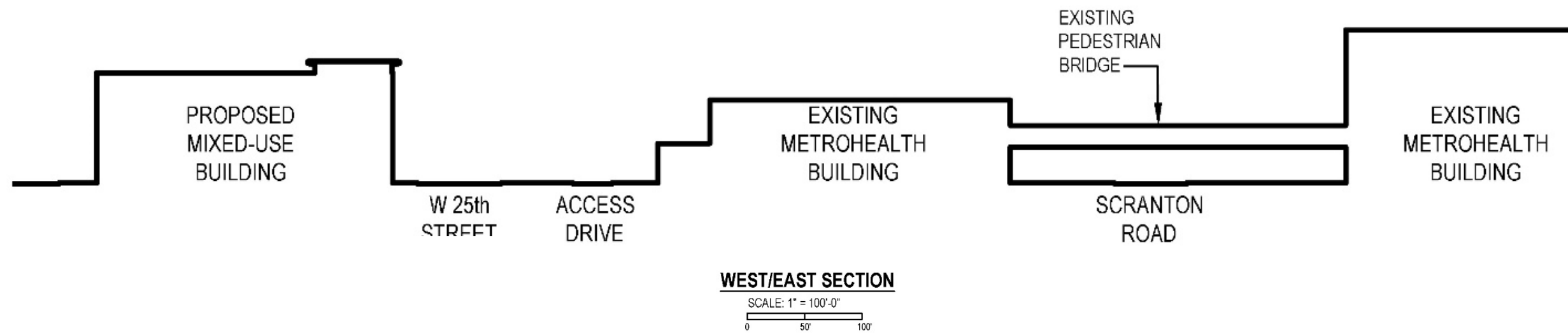
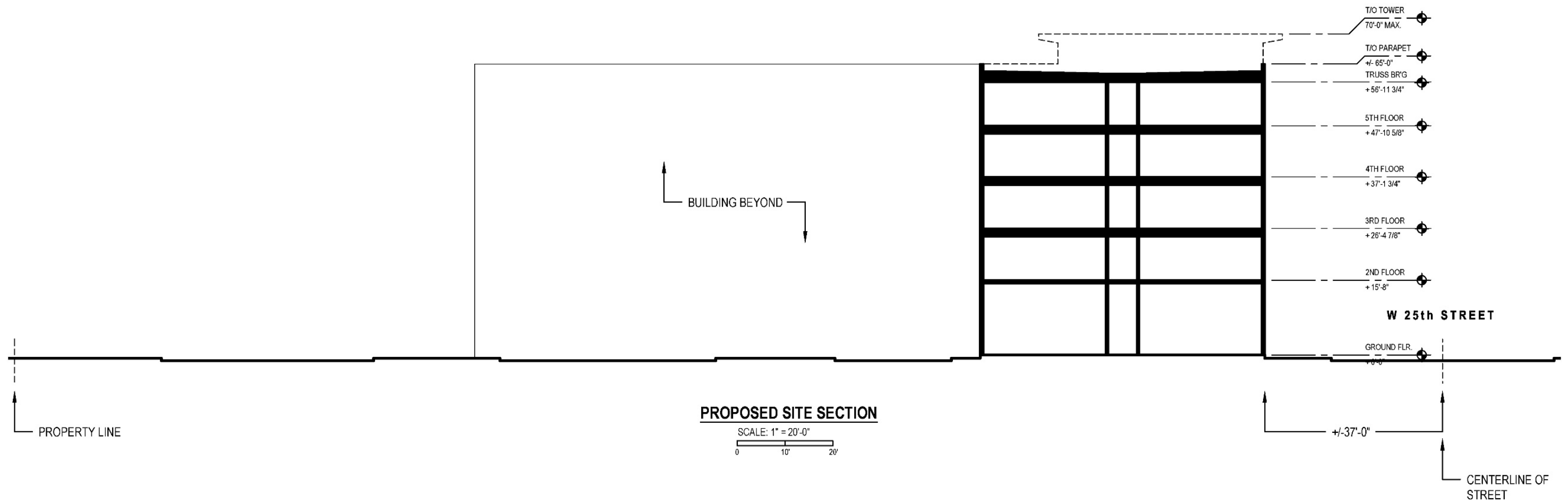




**PROPOSED SITE AND FLOOR PLANS**  
 METROHEALTH SOUTH | CLEVELAND, OHIO







**PROPOSED SITE SECTIONS**  
 METROHEALTH SOUTH | CLEVELAND, OHIO





**CONCEPT PERSPECTIVE**  
METROHEALTH SOUTH | CLEVELAND, OHIO

the  
**NRP**  
group LLC

**RDL**  
ARCHITECTS